



RAPID X

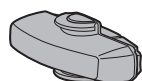
TL-LD700-R / TL-LD700-F

Manual



Before using the light, please read this manual and the included separate sheet "LITHIUM-ION / LITHIUM-ION POLYMER BATTERIES" thoroughly, and keep them for future reference.

Design Pat. Pending
Copyright© 2013 CATEYE Co., Ltd.
LD7R/LD7F-130924 2



Light unit



(MICRO USB)
USB cable



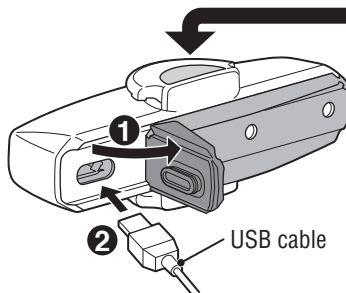
Rubber band
(Large/Small)



Shade sticker
(TL-LD700-F only)

1 HOW TO CHARGE

Always charge the product before use.



To PC or USB battery charger

Switch (Indicator)



Charging

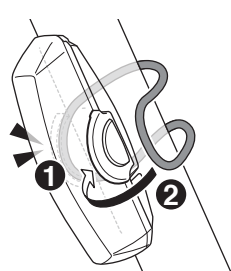


Charging is completed

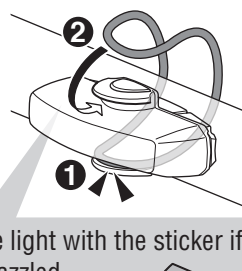
Standard
charging time

Approx. **2 h**
(USB 2.0)

2 HOW TO MOUNT

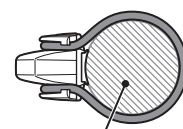


or



Shade the light with the sticker if you are dazzled.
(TL-LD700-F uniqueness)

Attach securely in the mounting position.



ø12 – 32 mm

⚠ PRECAUTIONS ON USE

- Before riding, check that the light unit is securely attached.
- Stop your bicycle to operate the switch.
- Keep the light away from children.
- This unit is not totally waterproof. Please wipe and dry it completely after using in rain. Otherwise, it may cause failure.
- If the light unit or parts become dirty with mud, etc., clean with a soft cloth which is moistened with mild soap. Never apply paint thinner, benzene or alcohol; damage will result.

⚠ PRECAUTIONS ON CHARGING

- We recommend using 500+mA (USB2.0) USB battery charger.
- Charging and lighting times are approximate values, and will vary by environmental and user conditions.

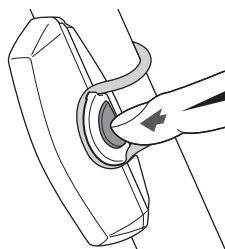
HOW TO REPLACE THE BATTERY

When the operating time decreases significantly, the battery life is close to an end. Please contact CatEye local distributor listed on our website www.cateye.com or CatEye for replacing battery.

⚠ PRECAUTIONS ON DISPOSAL

When disposing of the light unit, remove the internal rechargeable battery and dispose of it according to local regulations.

3 HOW TO USE



Press and hold

ON ↔ OFF

Click

Lighting mode switch

Hi	Low
Approx. 1 h	Approx. 5 h
Vibration	Flash
Approx. 8 h	Approx. 30 h
Pulse	Rapid
Approx. 16 h	Approx. 16 h

Remaining battery power

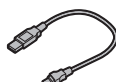
When the remaining battery power is low, the lighting mode switch starts flashing and the lighting mode changes to flash. Charge the light as soon as possible.



SPARE/OPTIONAL PARTS



5447010
Rubber band



(MICRO USB)
5342730
USB cable

SPECIFICATIONS

Battery : Rechargeable lithium polymer battery
Temperature range :

14°F – 104°F (-10°C – 40°C)

Recharge/discharge number of times :

About 300 times

(until the rated capacity drops to 70%)

Dimensions/weight :

2-59/64" x 3/8" x 1-7/32"

(74.2 x 24.4 x 30.8 mm) / 0.8 oz (22.5 g)

* The specifications and design are subject to change without notice.

LIMITED WARRANTY

2-year Warranty: Light unit only (excludes battery deterioration)

CatEye products are warranted to be free of defects from materials and workmanship for a period of 2 years from original purchase. If the product fails to work during normal use, CatEye will repair or replace the defect at no charge. Service must be performed by CatEye or an authorized retailer. To return the product, pack it carefully and enclose the warranty certificate (proof of purchase) with instruction for repair. Please write or type your name and address clearly on the warranty certificate. Insurance, handling and transportation charges to CatEye shall be borne by person desiring service. For UK and REPUBLIC OF IRELAND consumers, please return to the place of purchase. This does not affect your statutory rights.

Please register your CatEye product on the website.
<http://www.cateye.com/en/support/regist/>

CATEYE CO., LTD.

2-8-25, Kuwazu, Higashi Sumiyoshi-ku,
Osaka 546-0041 Japan
Attn : CATEYE Customer Service Section
Phone : (06)6719-6863
Fax : (06)6719-6033
E-mail : support@cateye.co.jp
URL : <http://www.cateye.com>

[For US Customers]
CATEYE AMERICA, INC.
2825 Wilderness Place Suite 1200,
Boulder CO 80301-5494 USA
Phone : 303.443.4595
Toll Free : 800.5.CATEYE
Fax : 303.473.0006
E-mail : service@cateye.com